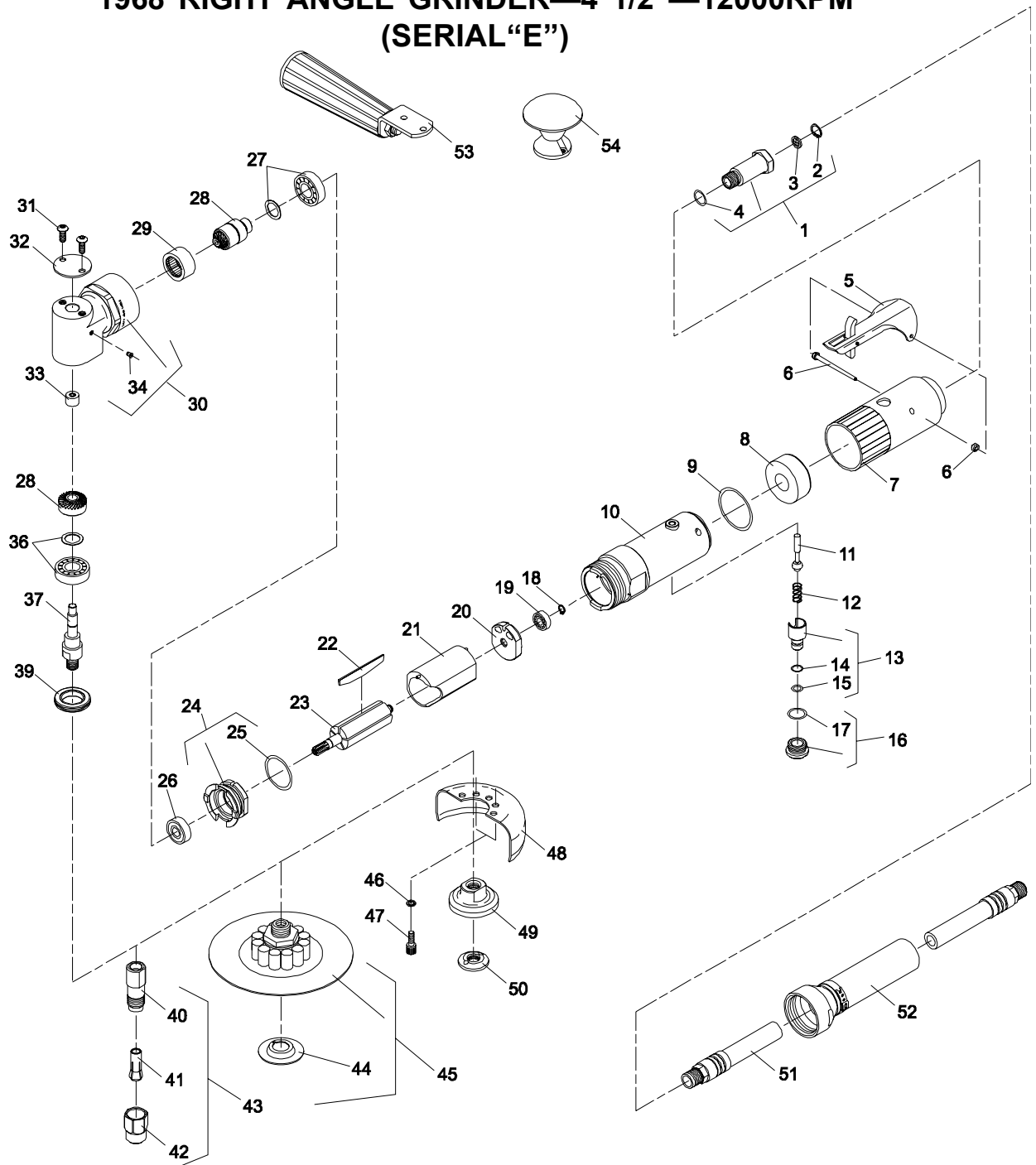




PARTS LIST FOR PARTS LIST FOR
1963 RIGHT ANGLE DIE GRINDER—12000RPM
1964 RIGHT ANGLE DIE GRINDER—18000RPM
1965 RIGHT ANGLE SANDER—5"—12000RPM
1965-5/8 RIGHT ANGLE SANDER—5"—12000RPM
1966 RIGHT ANGLE GRINDER—3"—18000RPM
1967 RIGHT ANGLE GRINDER—4"—12000RPM
1968 RIGHT ANGLE GRINDER—4 1/2"—12000RPM
(SERIAL "E")

Form A752F
Date 1-99/B
Page 1 of 2



SIouxTM
TOOLS INC.

2901 FLOYD BOULEVARD ■ PO BOX 507 ■ SIOUX CITY, IOWA 51102-0507 USA ■

Printed In U.S.A.



PARTS LIST FOR PARTS LIST FOR
1963 RIGHT ANGLE DIE GRINDER—12000RPM
1964 RIGHT ANGLE DIE GRINDER—18000RPM
1965 RIGHT ANGLE SANDER—5"—12000RPM
1965-5/8 RIGHT ANGLE SANDER—5"—12000RPM
1966 RIGHT ANGLE GRINDER—3"—18000RPM
1967 RIGHT ANGLE GRINDER—4"—12000RPM
1968 RIGHT ANGLE GRINDER—4 1/2"—12000RPM
(SERIAL "E")

Fig. No.	Part No.	Description	Fig. No.	Part No.	Description
1.	54837	Adaptor—Intake	39.	44776	Retainer—Bearing
2.	21541	Ring—Retaining	40.	21096	Body—Collet (1963, 1964)
3.	30463	Screen	41.	44440	Collet—1/4" (1963, 1964)
4.	14312	Ring—"O"	42.	21097	Nut—Collet (1963, 1964)
5.	63258	Ass'y—Lever	43.	43340	Chuck—1/4" Collet Complete (1963, 1964)
6.	66344	Ass'y—Pin	44.	563	Nut—Disk Retaining (Package of 6)(1965)
7.	04042	Cover—Housing		562	Nut—Disk Retaining (5/8-11)(1965-5/8)
8.	40116	Material—Exhaust	45.	2344	Pad—Backing [Incl. (1) Fig. 44](1965)
9.	14333	Ring—"O"		2364	Disk Backing 5" (5/8-11)(1965-5/8)
10.	64036	Housing	46.	09724	Washer—Lock (1966, 1967, 1968)(2)*
11.	63241	Ass'y—Valve	47.	07095	Screw—Socket Hd. Cap Screw (#10-24 x 1/2") (1966, 1967, 1968)(2)*
12.	21427	Spring	48.	2346	3" Wheel Guard [Incl. (2) Fig. 46 & 47](1966)
13.	54843	Speed—Control		2347	4" Wheel Guard [Incl. (2) Fig. 46 & 47](1967)
14.	14394	Ring—"O"		2341	4 1/2" Wheel Guard
15.	14291	Ring—"O"			[Incl. (2) Fig. 46 & 47](1968)
16.	54844	Retainer—Speed Control	49.	54958	Hub—Grinding Wheel (1966, 1967)
17.	14309	Ring—"O"		65747	Flange—Inner (1968)
18.	21491	Ring—Retaining	50.	54959	Retainer—Grinding Wheel (1966, 1967)
19.	10230	Bearing—Ball		65748	Flange—Outer (1968)
20.	10552	End Plate—Rear	51.	1376	Hose—Leader Remote Exhaust
21.	64057	Cylinder (18000 RPM)	52.	63355	Ass'y—Exhaust Hose
	65916	Cylinder (12000 RPM)	53.	2357	Handle—Auxiliary Not Furnished With 1963, 1964
22.	63192	Vane (Set of 5)	54.	2359	Knob—Auxiliary Not Furnished With Tool
23.	54861	Rotor			
24.	65335	End Plate—Front			
25.	14342	Ring—"O"			
26.	10220	Bearing—Ball			
27.	63234	Bearing & Spacer (Pinion)			
28.	19736	Gear Set			
29.	10081	Bearing—Caged Needle Roller			
30.	65388	Ass'y—Angle Head (Incl. Figs. 29, 33 & 34)			
31.	07097	Screw—Button Hd. Socket (#10-24 x 1/2")(2)*			
32.	35708	Cover			
33.	10082	Bearing—Caged Needle Roller			
34.	30375	Fitting—Grease			
36.	65860	Ass'y—Bearing & Spacer (Gear)			
37.	65961	Spindle—Output (1963, 1964, 1965)			
	65962	Spindle—Output (1966, 1967)			
	65963	Spindle—Output (1968)			
	66286	Spindle—Output (1965-5/8)			

Not Shown

30465	Wrench—9/16" (1963, 1964, 1965)
30466	Wrench—11/16" (1963, 1964)
30505	Wrench—5/8" (1966, 1967, 1968)
35545	Wrench—Spanner (1966, 1967)
30506	Wrench—Allen 3/16 (1965-5/8)
68015	Wrench—Spanner (1965-5/8, 1968)

Complete Assembly

65956	Ass'y—Angle Head Complete (1966, 1967)
65957	Ass'y—Angle Head Complete (1963, 1964, 1965)
66348	Ass'y—Angle Head Complete (1968)
66349	Ass'y—Angle Head Complete (1965-5/8)

*Order Quantity As Required

FURNISH CATALOG, SERIAL, AND MODEL NUMBER WHEN
ORDERING PARTS

SIouxTM
TOOLS INC.

2901 FLOYD BOULEVARD ■ PO BOX 507 ■ SIOUX CITY, IOWA 51102-0507 USA ■

Printed In U.S.A.